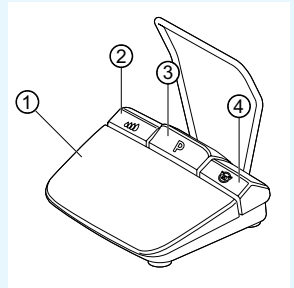


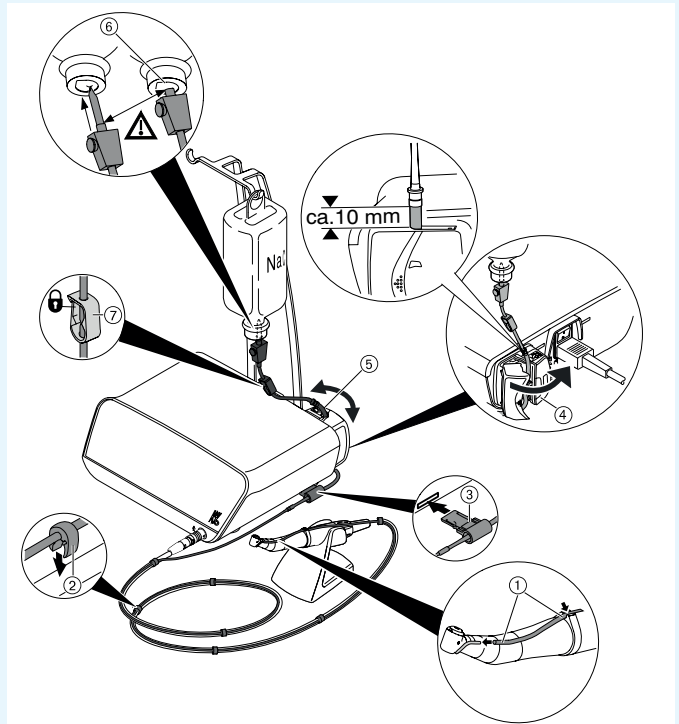
Short instructions for use

- ① **Speed key:** Start motor / increase speed.
- ② **Coolant key:** 2 operating modes can be set for the coolant key.
Depending on the set operating mode, the coolant key has the following functions:
Press briefly - switch coolant flow on/off or
Press briefly - set the coolant flow from 0 ml/s to 110 ml/s (4 steps).
Press long - activate the manual rinsing function.
- ③ **Program key:** Press briefly - Program step forward.
Press long - program step backwards.
- ④ **Direction of motor rotation key:** Set the direction of motor rotation.



Connecting the hose set

1. Close the hose clamp ⑦.
2. Attach the coolant hose ① to the straight or contra-angle handpiece.
3. Attach clips ② closely to the motor lead.
4. Engage hose adapter ③.
5. Insert hose into pump (approx. 1 cm clearance between connector and pump inlet).
6. Insert insertion needle ⑥.
7. Open the hose clamp ⑦.



Note

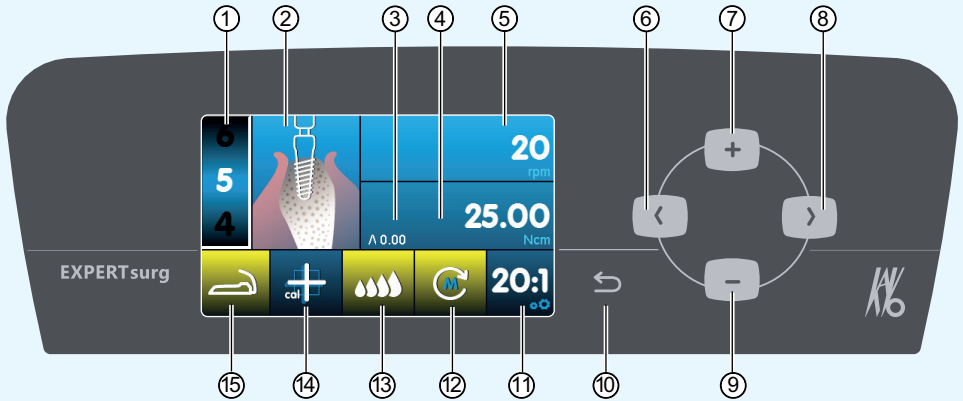
Open the vent at the insertion needle ⑥ only with glass bottles.



CAUTION

These brief instructions for use only contain the essential operating functions. It is essential to observe the instructions for use included in the delivery prior to the first start-up or in case of operation by persons who are not familiar with handling this medical device.





- ① Program step (1 to max. 10)
- ② Display of activity (separately selectable for every single program step)
- ③ Maximum torque achieved
- ④ Torque limit
- ⑤ Speed
- ⑥ Left arrow key
- ⑦ Plus key, increase value
- ⑧ Right arrow key
- ⑨ Minus key, decrease value
- ⑩ Back key (press briefly: back) (press longer: device settings)
- ⑪ Transmission ratio
- ⑫ Direction of motor rotation
- ⑬ Coolant pump settings
- ⑭ Activation of one-touch calibration (for exact determination of speed)
- ⑮ Foot control status indicator

Change parameter and activity

Select device setting

Press back key ⑩ briefly to proceed to the selection of program steps. Press longer to activate the device settings.

Selecting parameter or activity

(left arrow key ⑥ or right arrow key ⑧)

Changing parameter or activity

(plus key ⑦, minus key ⑨ or foot control keys)

Automatic saving on leaving the parameter or the activity.

Limiting the number of program steps

Select program step after the last chosen program step and select "Flag" activity.

Cancelling the limitation of program steps

Select program with "Flag" activity and choose new activity.

