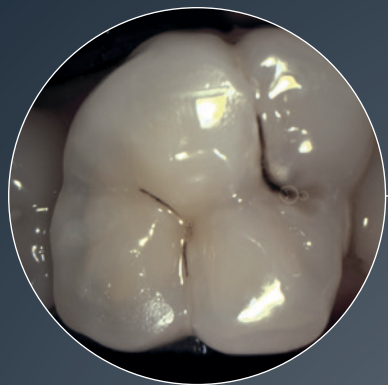
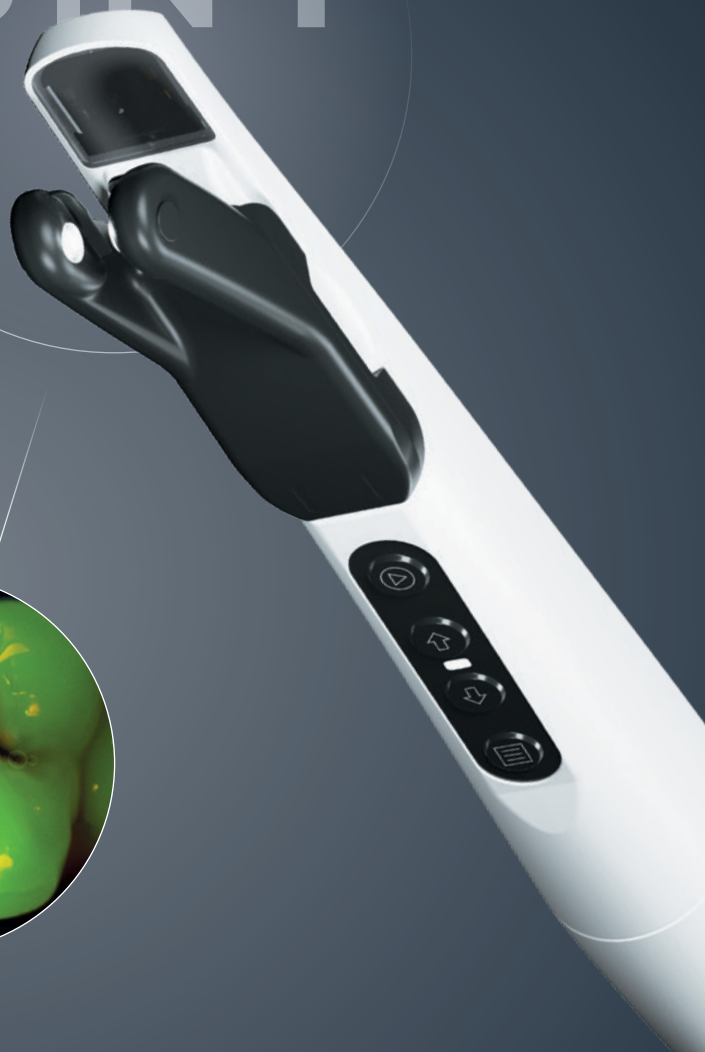
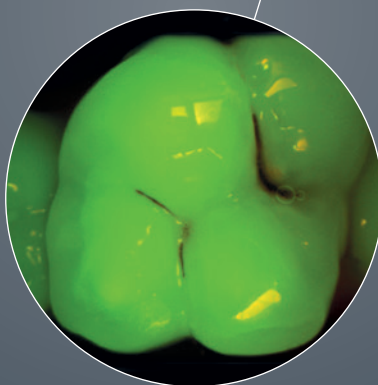
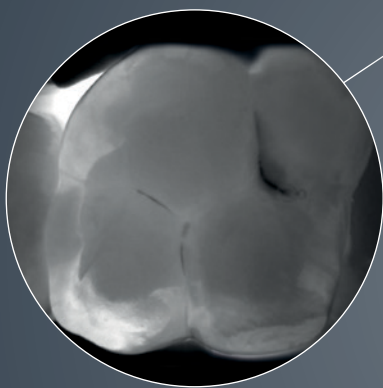


# Options and Configurations

## KaVo DIAGNOcam™ Vision Full HD



3 IN 1



The only Full HD camera that creates three clinically relevant images in less than a second.

Only one camera allows you to reliably detect the earliest signs of caries using a combination of intraoral, transillumination and fluorescence images: the KaVo DIAGNOcam Vision Full HD provides you with three crystal-clear and clinically relevant Full HD images in less than a second.

KaVo™ and DIAGNOcam™ are registered trademarks of KaVo Dental GmbH.

**KAVO**  
Dental Excellence

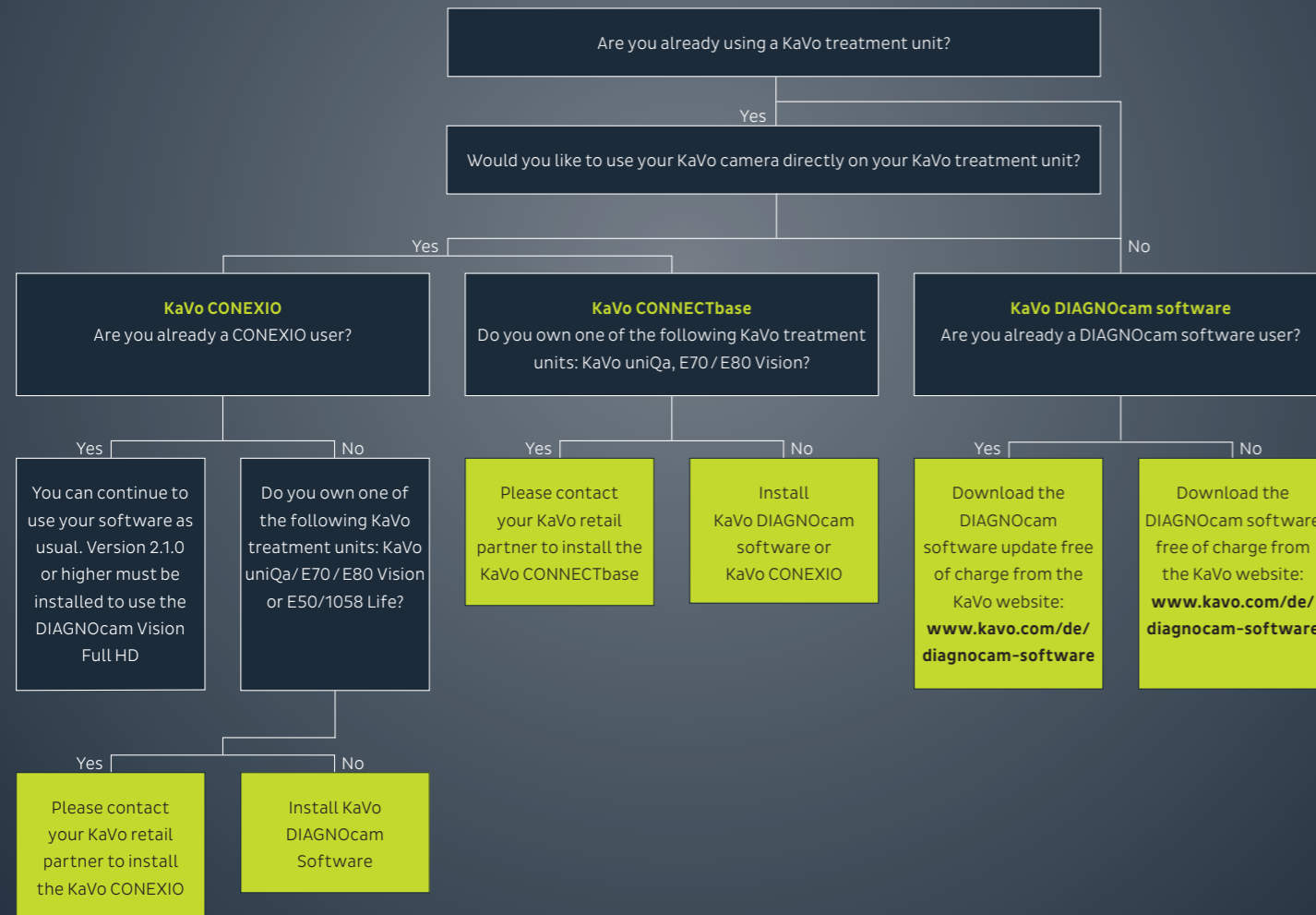
# Hardware and software

## KaVo DIAGNOcam™ Vision Full HD

### Hardware options:



### Software options:



# Let's compare

## KaVo Patient Communication Systems



	KaVo CONNECTbase	KaVo CONEXIO	KaVo DIAGNOcam Software
<b>Applications</b>	KaVo Treatment Unit	KaVo Treatment Unit, PC	PC
<b>Product description</b>	Autonomous system integrated into your KaVo treatment unit	Software is installed on the PC connected to your KaVo treatment unit	Software is installed on the PC
<b>Does software need to be installed on the PC?</b>	No	Yes	Yes
<b>Can this element be integrated with practice management software?</b>	Will become available at a later date (image transfer via USB possible)	Yes	Yes
<b>Compatible camera systems</b>	<ul style="list-style-type: none"> <li>• KaVo ERGOcam One</li> <li>• KaVo DIAGNOcam</li> <li>• KaVo DIAGNOcam Vision Full HD</li> </ul>	<ul style="list-style-type: none"> <li>• KaVo ERGOcam One</li> <li>• KaVo DIAGNOcam</li> <li>• KaVo DIAGNOcam Vision Full HD</li> </ul>	<ul style="list-style-type: none"> <li>• KaVo DIAGNOcam</li> <li>• KaVo DIAGNOcam Vision Full HD</li> </ul>
<b>Operation</b>	<ul style="list-style-type: none"> <li>• Camera buttons</li> <li>• Dentist element touch display</li> <li>• Treatment unit foot pedal</li> </ul>	<ul style="list-style-type: none"> <li>• Camera buttons</li> <li>• Dentist element touch display</li> <li>• Treatment unit foot pedal</li> <li>• PC (mouse, keyboard)</li> </ul>	<ul style="list-style-type: none"> <li>• Camera buttons</li> <li>• PC (mouse, keyboard)</li> </ul>
<b>Switching between sources directly from the dentist element on the treatment unit</b>	Yes (2x HDMI)	No	Not applicable
<b>Images are displayed directly on the dentist element on the treatment unit</b>	Yes	Yes	Not applicable
<b>Image can be compared with previous images</b>	Yes	Yes	Yes
<b>Odontogram and clinical monitoring status</b>	No	Yes	Yes
<b>Media availability (e.g. screensaver, welcome screen)</b>	Yes	No	No
<b>Remote access and treatment unit updates</b>	Yes (LAN)	No	Not applicable
<b>Availability of KaVo treatment units</b>	KaVo uniQa KaVo E70 / E80 Vision	KaVo uniQa KaVo E70 / E80 Vision KaVo E50 / 1050 Life	Not applicable

