

# CERAMAGE<sup>UP</sup>

Light-curing, Flowable Microhybrid Composite  
for Free Build-up



# Convincingly Different

Dental veneering systems have to meet ever-changing requirements. Patients have very high aesthetic expectations and desire results that appear as natural as possible not only in the case of ceramic restorations. It is important that ceramic reduced materials also allow to offer perfect solutions.

Ceramage UP is a high-end microhybrid composite which sets new standards in the field of light-cured veneering and restorative materials.

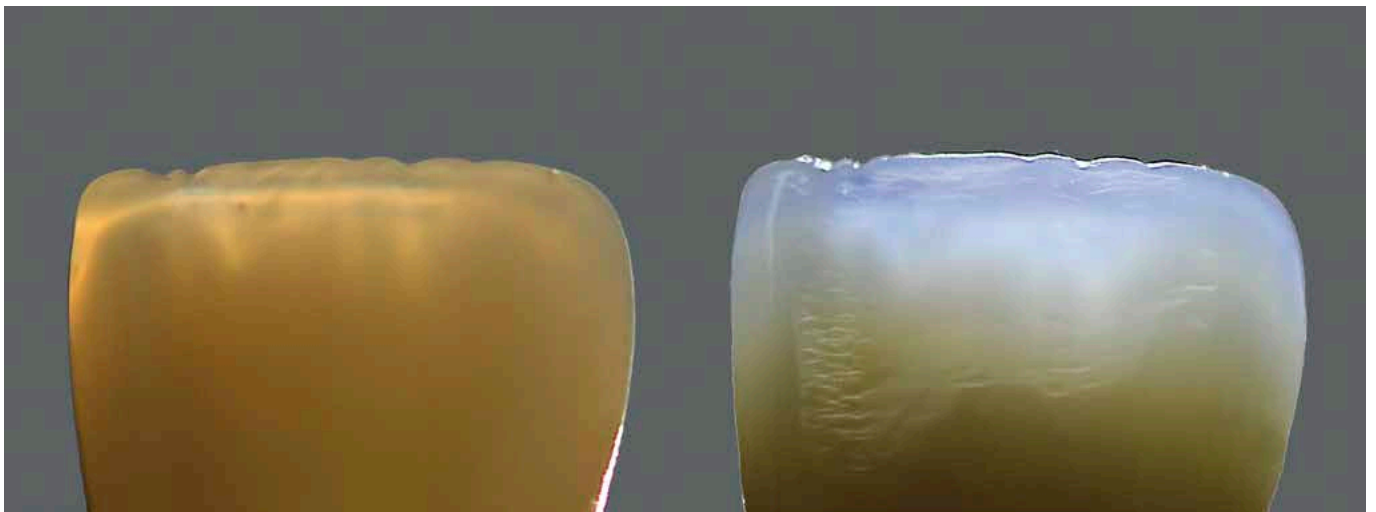
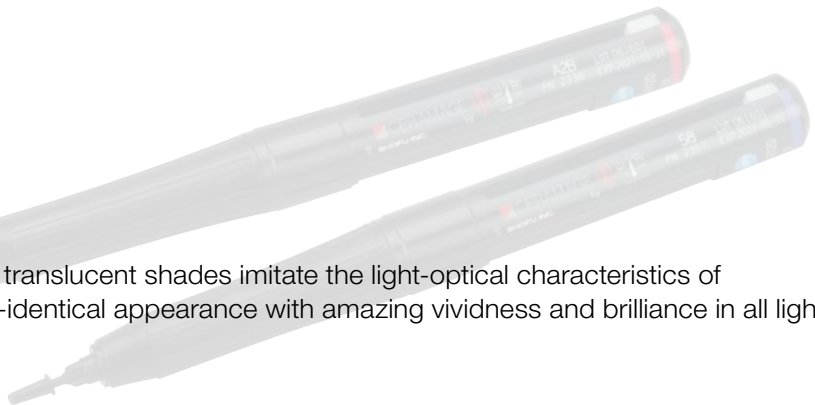
This high-performance material combines all the benefits of composites and ceramics in one product.

Thanks to the thixotropic viscosity of this ready-to-use composite, you can freely build up tooth shapes directly by dispensing or using a probe or brush.



## Indistinguishably Natural

The opalescent Ceramage UP incisal and translucent shades imitate the light-optical characteristics of natural teeth. This helps to achieve nature-identical appearance with amazing vividness and brilliance in all light conditions.



# Complete System for All Indications

Ceramage UP uniquely combines economy and cost-effectiveness in a compact and complete system. Moreover, this high-tech material is extremely durable, elastic and aesthetic.

Unlike ceramics, Ceramage UP absorbs stress, a remarkable benefit in cases of high occlusal loads.

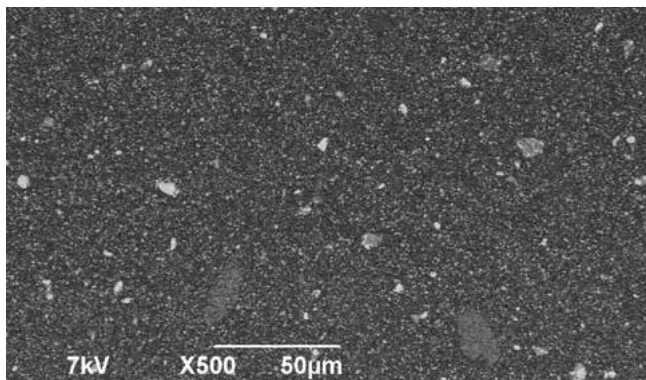
The wide range of indications includes all types of long-lasting, comfortable anterior and posterior restorations.

- Fully veneered crowns and bridges
- Fully veneered telescopic and implant suprastructures
- Attachment works
- Occlusal restorations
- Inlays / onlays
- Veneers
- Long term temporaries
- Characterisation of denture teeth

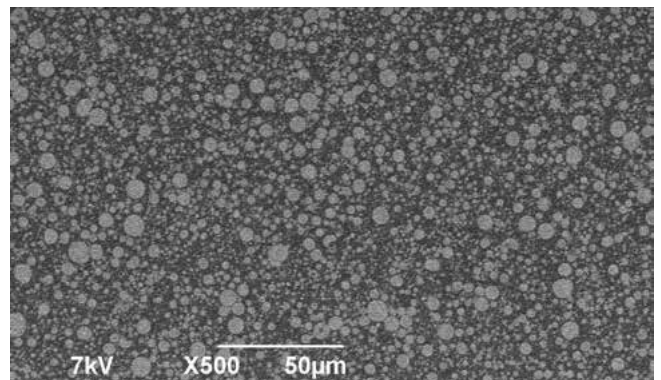


## Unique

The high ceramic filler-load and the homogeneously compacted nanostructure of Ceramage UP ensure excellent abrasion resistance, flexural strength and colour stability. This composition makes it a unique veneering material.



Conventional flowable composites often show a lower filler content and an irregular structural distribution.



Thanks to its homogeneous and dense nanostructure, Ceramage UP is both flowable and sculptable.

## Modern and Efficient

A modern composite system has to fulfil numerous criteria: Natural shades for an aesthetic appearance, high strength and elasticity, excellent polishability, and reliable oral durability. Ceramage UP allows you to create truly extraordinary restorations that perfectly meet all these requirements.



## benefits

Almost unlimited range of indications

Efficient and easy reproduction of all tooth shades, based on the VITA\* Classical shade system

Amazingly natural aesthetics and opalescence

Outstanding strength and abrasion resistance

Reliable bonding to all dental alloys and ceramic or hybrid ceramic framework materials with SHOFU Universal Primer and CRB bonding system

Excellent polishability and surface density

Plaque resistance and colour stability

## Customisable and Reliable

To further customise the appearances of anterior and posterior restorations, the composite shades can easily be mixed with each other. When using pasty materials, mixing often leads to more air inclusions and an inhomogeneous consistency. As a flowable composite, Ceramage UP offers maximum versatility and reliability.

The shades can be mixed just like porcelains to obtain any intermediate shade desired depending on your individual aesthetic requirements.



# Ensuring Maximum Versatility and Aesthetics

Ceramage UP is a modular veneering composite system, and the shades of all its components are ideally matched to each other.

## Basic Shades

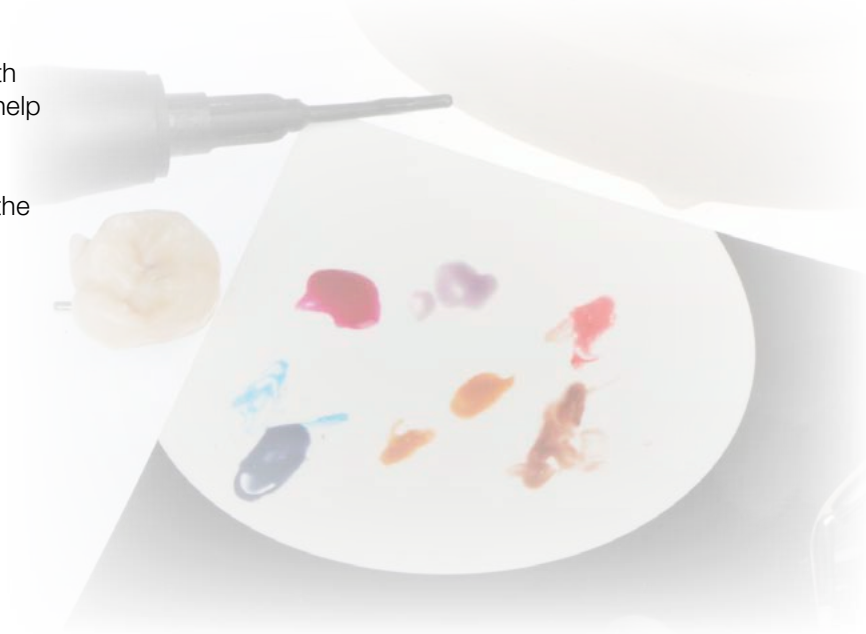
Shade	A1	A2	A3	A3,5	A4	rootA	B1	B2	B3	B4	C1	C2	C3	C4	D2	D3	D4
SHOFU UNIVERSAL OPAQUE	A1O	A2O	A3O	A3,5O	A4O	rootAO	B1O	B2O	B3O	B4O	C1O	C2O	C3O	C4O	D2O	D3O	D4O
CERVICAL	—	AC1	AC2	—	—	—	BC1	BC2	—	—	CC1	CC2	DC1	DC2	—	—	—
OPAQUE DENTIN	ODA1	ODA2	ODA3	ODA3,5	ODA4	ODrootA	ODB1	ODB2	ODB3	ODB4	ODC1	ODC2	ODC3	ODC4	ODD2	ODD3	ODD4
BODY	A1B	A2B	A3B	A3,5B	A4B	rootAB	B1B	B2B	B3B	B4B	C1B	C2B	C3B	C4B	D2B	D3B	D4B
INCISAL	58	59	60	57	58	59	60	58	59	60	59	60	59	60	59	60	59

The basic shades correspond to the VITA® Classical shade system.

## Whitening Shades

More and more patients decide to have their teeth whitened. The Ceramage UP whitening shades help to accurately adjust your restorations to the shades of bleached teeth. The whitening shades W0 to W3 correspond to the bleach shades BL1 to BL4.

Shade	W0	W1	W2	W3
SHOFU UNIVERSAL OPAQUE	W0O	W1O	W2O	W3O
BODY	W0B	W1B	W2B	W3B
INCISAL	56	57	56	57



## Effect and Gum Shades

In addition to the basic incisal shades, the Ceramage UP system also includes numerous translucent effect and intensive shades. This wide spectrum gives you the freedom to meet any aesthetic challenge.

For "red aesthetics", there are 11 gum shades to choose from.

SHOFU UNIVERSAL OPAQUE	OP	BSG	OP	WO	GUM-O	OP	WPC	WVO	OP	WPO	
TRANSLUCENT	T	HVT	LVT	T-Glass	BG	GT	CT-A	CT-B			
INCISAL	56	57	58	59	60						
CONCENTRATE	MY	WE	OC	AM-Y	W						
GUM COLOR	GUM-L	GUM-D	GUM-Or	GUM-Br	GUM-V	GUM-R	GUM-LP	GUM-DP	GUM-SP	GUM-P	GUM-T

# Order Information



## CERAMAGE UP 8 Color Set

Basic assortment for restorations in the shades A1 to A4, B2, B3 and C2

PN 2305 \*\*



## CERAMAGE UP 2 Color Set

Economical introduction into the Ceramage UP technique; for restorations in the shades A2 and A3

PN 2306 \*\*

## Related Products



### Solidilite V / Sublite V

The team for efficient and gentle light-curing

Solidilite V: PN 5106

Sublite V: PN 5108



### Solidilite LED

Powerful LED light-curing unit with broad band of wavelengths for veneering composites and 3D printing materials

PN E031



### Lite Art Full Set

15 fluorescent light-curing paste stains for individual accents

PN 1970



### SHOFU Universal Primer

For reliable bonding of composites to all dental alloys, zirconia and alumina

PN Y0060



### CRB - Ceresin Bond

For durable bonding between composites, resins and ceramics without any compromise

PN 1741

\* VITA is a registered trademark of VITA Zahnfabrik, Bad Säckingen, Germany.

\*\* SHOFU MZ Primer Plus must be ordered separately.

