

A powerful duo for reliable bonding



CRB – Ceraresin Bond

The **Ceraresin Bond** system allows you to reliably and durably bond a wide variety of dental materials both intra- and extraorally.

Ceraresin Bond can be used, for example, to quickly and efficiently repair or complete porcelain restorations with light-cured materials. Moreover, **CRB** reliably bonds light-cured veneering composites to self-cured resins, or to each other. And there are no limits to individualising denture teeth with light-cured veneering materials.

The bonds created are extremely resistant to moisture and thermal stress.

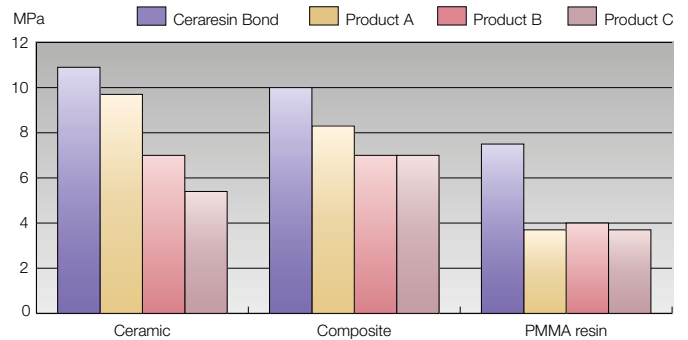


Durable bonds without compromise

Ceraresin Bond excellently and durably bonds light- and self-cured composites to all ceramic veneering materials.

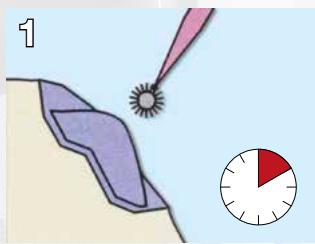
Since it is very easy to use both intra- and extraorally, **Ceraresin Bond** has virtually limitless applications in dental practices and laboratories.

Even in the long term, the strong bonds created with **Ceraresin Bond** are durable without compromise.



Bond strengths of composites to different materials with **Ceraresin Bond** compared with ceramic/resin bonding systems of other manufacturers

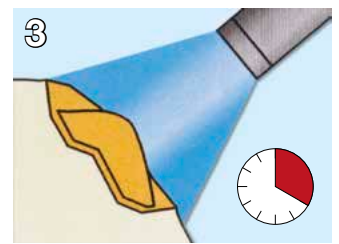
Easy and fast application



Apply CRB 1 / leave for 10 sec



Apply CRB 2 / leave for 10 sec



Light-cure for 20 sec / ready for composite application

Versatile system

- Intra- and extraoral use
- Repair and completion of ceramic crowns and bridges with veneering composites
- Completion of ceramic and resin teeth with composites
- Reliable bonding between self-cured resins and light-cured veneering composites
- Increasing bond strengths between highly cross-linked acrylic teeth and self-cured denture resins
- Combinable with SHOFU Universal Primer for metal-based restorations



CRB Kit, PN 1741



Manufacturer
SHOFU INC.

11 Kamitakamatsu-cho,
Fukuine, Higashiyama-ku,
Kyoto 605-0983, Japan

EC REP SHOFU DENTAL GmbH

An der Pönt 70, 40885 Ratingen, Germany

www.shofu.com