

# BeutiSealant

Self-etching fluoride releasing  
pit & fissure sealant



PRG  
Technology  
**Giomer**



# BeautiSealant

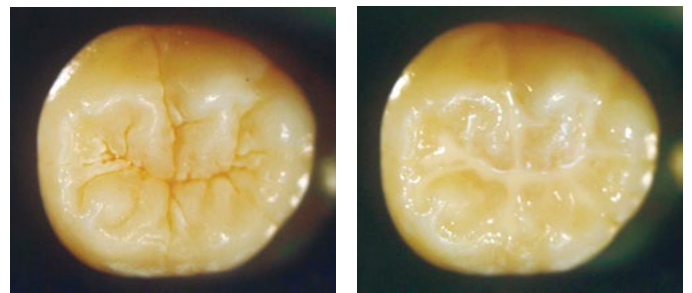
For decades, dentists and hygienists have had no alternative but to use phosphoric acid etching as “a necessary evil” to improve the bondability of dental sealants. In doing so, they have not only lost countless hours to these laborious steps, but also have inevitably destroyed otherwise healthy tooth structure with the damaging effects of harsh acids.

Driven by modern concepts of minimally invasive cosmetic dentistry, and recent developments in adhesives technology, SHOFU has created a faster, easier, and gentler sealant system that eliminates the need for phosphoric acid etch and rinse steps entirely, while still maintaining equal or better shear bond strengths. Moreover, the unique Surface Pre-Reacted Glass ionomer (S-PRG) filler particles have been shown to assist in the remineralisation process [1].

- Ideal handling and viscosity: eliminate voids with bubble-free consistency
- Radiopacity equal to dentine: 0.92 mm Al
- Unique cariostatic properties of S-PRG fillers
- High shear bond strength without phosphoric acid etch or rinse required
- Four easy steps; 30 second application
- Bisphenol A- and HEMA-free

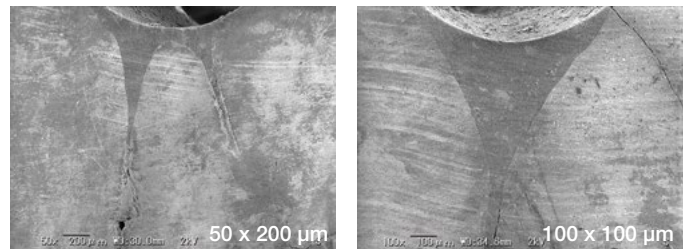
## Gentle on enamel

BeautiSealant primer is Bisphenol A- and HEMA-free with dual adhesive monomers that thoroughly penetrate and prepare pits and fissures for bonding to the sealant. Unlike traditional sealants which require phosphoric acid etching, demineralising and dehydrating healthy teeth, SHOFU's self-etching primer is significantly less acidic helping to preserve healthy tooth structure.



BeautiSealant is an easy to apply sealant optimised for smooth, bubble-free consistency. Achieve precise delivery without the common issue of overfilling with our specially designed no-ooze syringe, and a fine 27 gauge needle tip.

## SEM photos of deep penetration into fissures



## Four easy steps



**1** Apply primer to clean tooth and leave for 5 seconds



**2** Gently air dry for 5 seconds

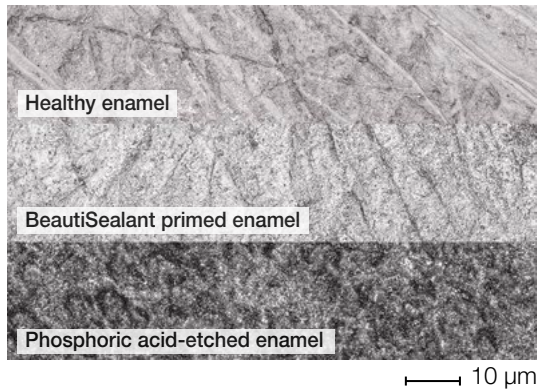


**3** Apply paste

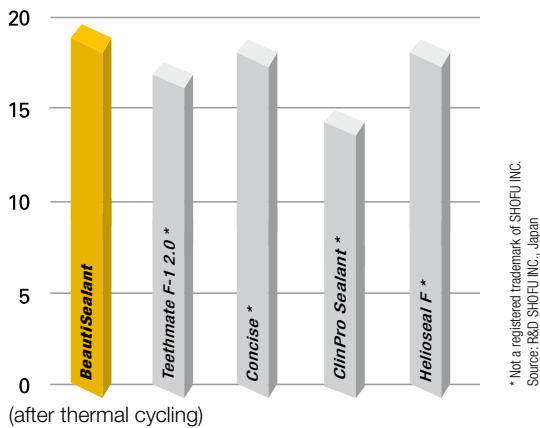


**4** Light cure with a halogen (20 seconds) or LED (10 seconds) curing light

## No acid etch



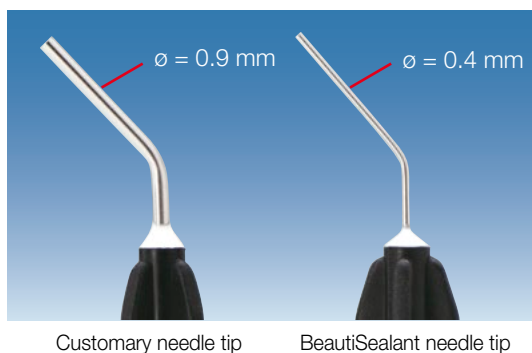
## Shear bond strength to enamel (MPa)



Despite the lack of phosphoric acid etching and a HEMA-free composition, shear bond strengths remain at levels that meet or exceed market leading sealants at 19.5 MPa.

## Fine needle tip for fissure sealing

The only 0.4 mm wide needle tip allows precise control and dosage of the paste. The usual overfilling is largely avoided.

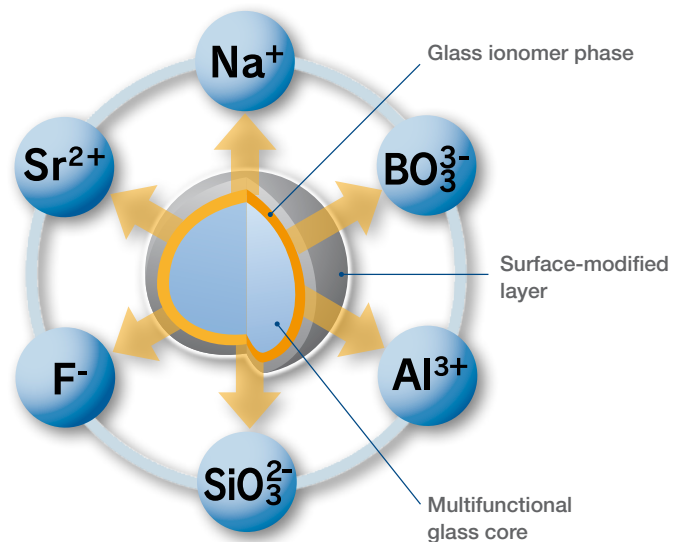


## A Giomer

refers to any product containing SHOFU's proprietary S-PRG filler particles. These fillers uniquely release six ions: Fluoride, Sodium, Strontium, Aluminum, Silicate and Borate, all with known bioactive properties.

Unlike glass ionomers and compomers which require water absorption following photocure to release fluoride, Giomers contain a multi-functional glass core that undergoes an acid-base reaction during manufacturing and is subsequently protected by a surface modified layer. This trilaminar structure forms a type of stable glass ionomer which allows ion release and recharge to take place, while protecting the glass core from the damaging effects of moisture, greatly improving long-term durability.

With its unique Giomer chemistry, BeautiSealant is therefore able to recharge its fluoride ions from household dental hygiene products such as toothpaste, providing sustained remineralisation benefits to adjacent tooth structure over the life of the sealant.



### Key features of Giomer materials

- Recharge fluoride when treated with fluoridated products
- Decrease acid production of cariogenic bacteria
- Neutralise acid on contact
- Slow demineralisation, while promoting remineralisation of enamel
- Anti-plaque effect

# Order information



## BeautiSealant Set

- BeautiSealant paste, 1.2 g
  - BeautiSealant primer, 3 ml
  - 15 needle tips
  - 50 Microbrush Fine (pink)
  - 25 V-dish
- PN 1798

BeautiSealant paste, 1.2 g  
PN 1799

BeautiSealant primer, 3 ml  
PN 1800

BeautiSealant needle tips, 50 pcs.  
PN 1794

## Prophylaxis pastes



### Merssage Regular

contains fluoride, RDA 170-180  
mint flavour, tube of 40 g  
PN 0572



### Merssage Plus

contains fluoride, RDA < 10  
orange flavour, tube of 38 g  
PN 0575



### Merssage Fine

contains fluoride, RDA 40-50  
lemon flavour, tube of 40 g  
PN 0573



### Pressage

non-fluoride, RDA 170-180  
tasteless, tube of 40 g  
PN 0574

[1] Koji Kawasaki, Masaki Kambara: "Effects of Ion-Releasing Tooth-Coating Material on Demineralization of Bovine Tooth Enamel"  
Hindawi Publishing Corporation, International Journal of Dentistry, Volume 2014, Article ID 463149



**SHOFU INC.** 11 Kamitakamatsu-cho, Fukuine, Higashiyama-ku, Kyoto 605-0983, Japan  
**SHOFU DENTAL GmbH** An der Pönt 70, 40885 Ratingen, Germany, www.shofu.de

SHOFU is a registered trademark of SHOFU INC. All other trademarks and registered trademarks are the property of their respective holders. SHOFU INC. reserves the right to change specifications without notice.

