

BEAUTIFIL Flow Plus

Injectable Hybrid Restorative Material
for Anterior and Posterior Teeth



PRG
Technology
Giomer

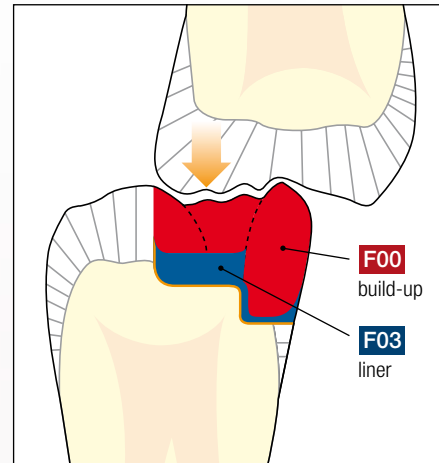


Strength of a Hybrid...

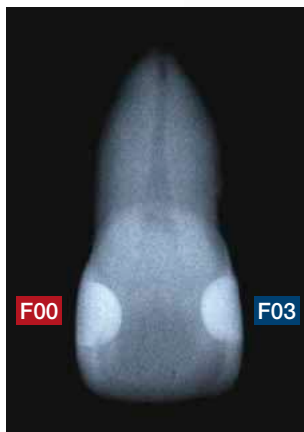
The hallmarks of the Beautifil restoration system are its light diffusion and transmission properties that are analogous to enamel and dentine, its extraordinary formability and the capability of the patented filler technology to release and recharge fluoride.

Beautifil Flow Plus is the next step in the evolution of restorative materials, combining the delivery of a flowable and the strength, durability and aesthetics of hybrid composites.

Beautifil Flow Plus is approved for every indication – including the occlusal surfaces and proximal margins. With improved handling properties allowing an injectable application, creating posterior restorations has never been easier. Moreover, the ability of Beautifil Flow Plus to release and recharge fluoride and its resistance to bacterial colonisation makes it ideal for the prevention of secondary caries.



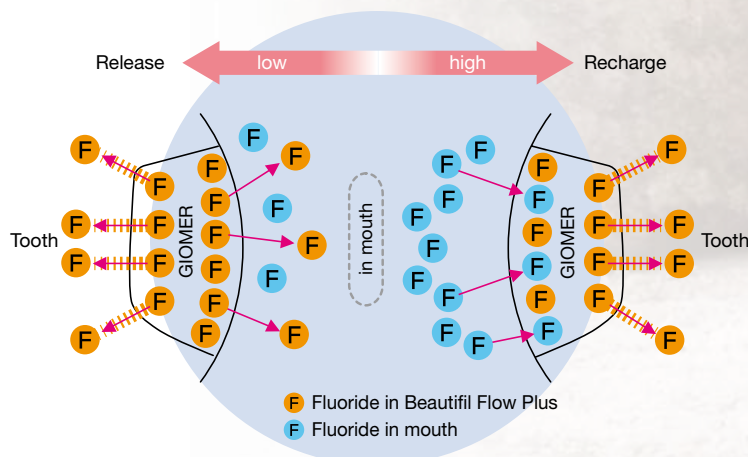
Occlusal load



The Plus Benefits for You

- Class I to class V restorations
- Suitable for occlusal surfaces
- Easy injectable application
- Chameleon effect for natural aesthetics
- Sustained fluoride release and recharge
- Remarkable radiopacity

Concentration of fluoride in the mouth



Fluoride release and recharge from Beautifil Flow Plus

...Delivered Like a Flow

Case 1 - Restoration of class I cavity



Before



After filling

Photographs courtesy of Dr. Ken Kobayashi

Case 2 - Replacement of a gold inlay



Before



After filling

Photographs courtesy of Dr. Naotake Akimoto, Tsurumi University, Japan

Natural Aesthetics with Superb Polishability

A wide range of shades allows you to offer your patients a safe all-round, fluoride-rich system with an aesthetic appearance. The basic shades have been optimised to exhibit a chameleon effect, thus harmonising with the surrounding tooth structure.

The unique balance of resin and filler distribution ensures an excellent polish retained over time for a lasting enamel-like lustre.

F00

A1	A2	A3	A3.5	A4	
B1	B2	C2	D2		
SA0.5	SA0.50	A10	A20	Inc	BW

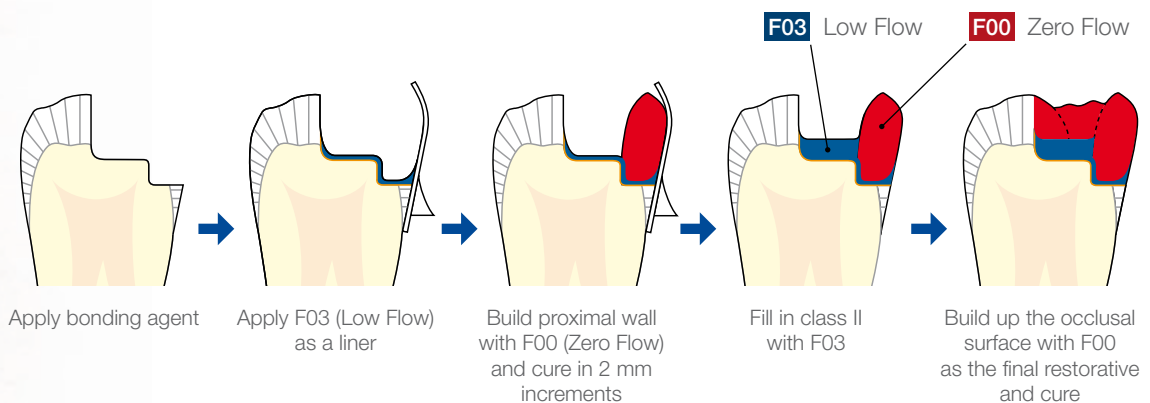
F03

A1	A2	A3	A3.5	A4		
B1	B2	C2	D2			
SA0.5	A20	A30	Inc	BW	MI	CV



Resin Cone Technique

Simply prepare the tooth using your technique of choice, apply any bonding agent (e.g. BeautiBond Universal, BeautiBond or FL-Bond II), apply Low Flow as a base liner, and build up the occlusal surface by using Zero Flow. The self-levelling nature of Beautifil Flow Plus means placement and polishing have never been easier!



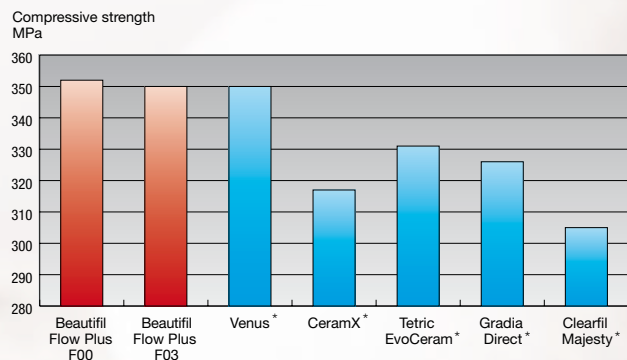
Reliable Strength and Durability

Based on the ability of Beautiful Flow Plus to withstand compressive pressure, the material can be used as a traditional flowable as well as a finishing material on the occlusal surface of the tooth, ensuring well balanced physical properties for long-lasting and aesthetic restorations.

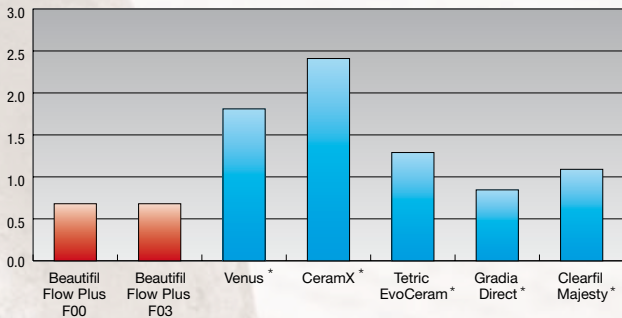
Comparison of BEAUTIFIL Flow Plus with Other Hybrid Resins

Compressive strength

The compressive strength of Beautiful Flow Plus is equal or superior to those of leading hybrid composites and ideal for class I and class II restorations.



Toothbrush wear wt%

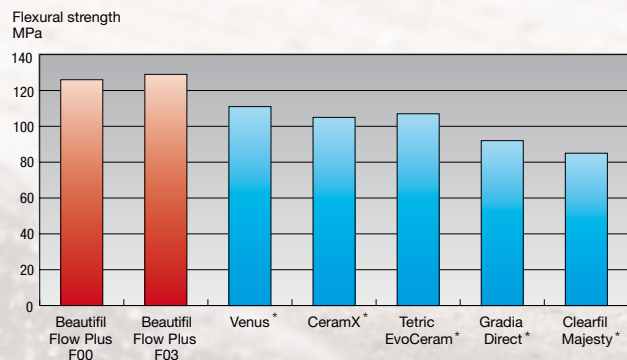


Wear resistance

An extremely low wear rate provides long-term aesthetics over the life of the restoration, maintaining a high lustre.

Flexural strength

Due to the high flexural strength and the respective resistance to elastic and plastic deformation Beautiful Flow Plus is ideal to create occlusal surfaces.



* Not a registered trademark of SHOFU INC.
Source: R&D SHOFU INC.

Order Information



BEAUTIFIL Flow Plus F00

Injectable hybrid restorative material; syringes with 2.2 g and tips with 0.21 g each in the shades SA0.5, A1, A2, A3, A3.5, A4, B1, B2, C2, D2, SA0.50, A10, A20, Incisal, Bleaching White



BEAUTIFIL Flow Plus F03

Injectable hybrid restorative material; syringes with 2.2 g and tips with 0.21 g each in the shades SA0.5, A1, A2, A3, A3.5, A4, B1, B2, C2, D2, A20, A30, Incisal, Bleaching White, Milky, Cervical



BEAUTIFIL Flow F02

Fluoride releasing flowable composite; syringes with 2 g each in the shades A1, A2, A3, A3.5, A4, A30, G (Gum)



BEAUTIFIL Flow F10

Fluoride releasing flowable composite; syringes with 2 g each in the shades A1, A2, A3, A3.5, A4, A30, A3T



BEAUTIFIL II

Fluoride releasing composite; syringes with 4.5 g and tips with 0.25 g each in the shades A1, A2, A3, A3.5, A4, B1, B2, B3, C2, C3, Incisal, Bleaching White, A20, A30 (tips not in B3, C3)



BEAUTIFIL OPAQUER

Fluoride releasing flowable, highly opaque composite; syringes with 2 g each in the shades UO (Universal Opaque) and LO (Light Opaque)



SHOFU INC. 11 Kamitakamatsu-cho, Fukuine, Higashiyama-ku, Kyoto 605-0983, Japan
SHOFU DENTAL GmbH Am Brüll 17, 40878 Ratingen, Germany, www.shofu.de

SHOFU is a registered trademark of SHOFU INC. All other trademarks and registered trademarks are the property of their respective holders. SHOFU INC. reserves the right to change specifications without notice.

Official Partner



Minimally Invasive
Cosmetic Dentistry

410202 - 06/2019